



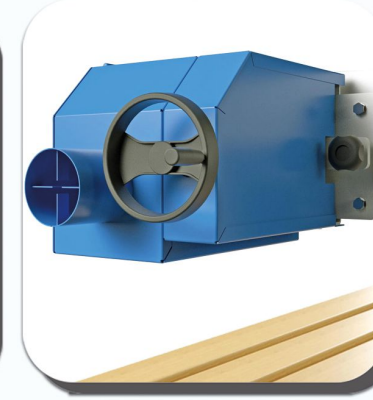
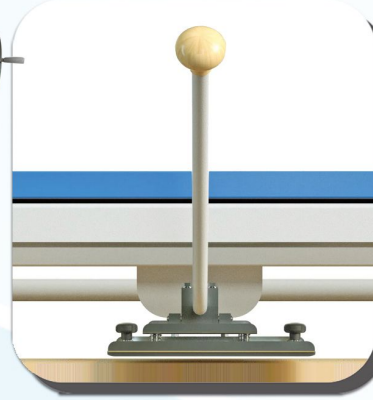
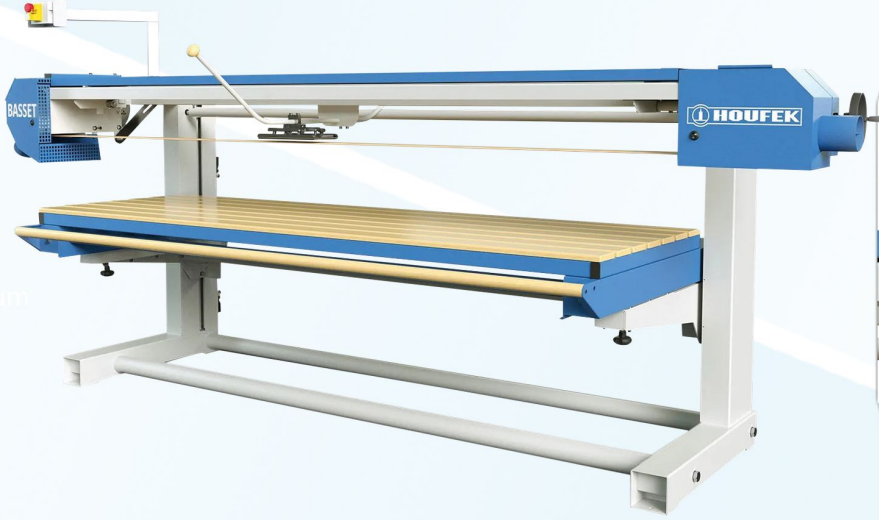
# ÜNVER®

AĞAÇ İŞLEME MAKİNALARI

SINCE 1980

## BANT ZIMPARA MAKİNASI

**BELT SANDER MACHINE**



TEKNİK ÖZELLİKLER	TECHNICAL INFORMATION	BASSET 3000	BASSET 2500	BASSET 2200
ÇALIŞMA TABLASI UZUNLUĞU	WORK TABLE LENGTH	3.000 MM	2.500 MM	2.200 MM
ZIMPARA ÖLÇÜLERİ	SANDING BELT DIMENSIONS	8.000 X 150 MM	7.000 X 150 MM	6.400 X 150 MM
BANT ZIMPARA HIZI (M/DK)	SANDING BELT SPEED (M/MIN)	17	17	17
YATAY VE DİKEY TABLA HAREKETİ	HORIZONTAL AND VERTICAL TABLE TRAVEL	700 X 540 MM	700 X 540 MM	700 X 540 MM
ÇALIŞMA ÜNİTESİ AÇISI	TILTABLE SANDING UNIT	90°	90°	90°
MAK. İŞ PARÇASI AĞIRLIĞI	MAX. WORKPIECE WEIGHT	100 KG	100 KG	100 KG
MOTOR GÜCÜ	MOTOR POWER	3 KW	3 KW	3 KW
ÖLÇÜLER (BOY X EN X YÜKSEKLİK)	DIMENSIONS (LENGTH X WIDTH X HEIGHT)	4.200 X 1.300 X 1.700 M	3.700 X 1.300 X 1.700 M	3.400 X 1.300 X 1.700 M
AĞIRLIK	WEIGHT	530 KG	516 KG	504 KG

### FABRİKA / FACTORY

Önder Mah. Akçakale 2 Cadde No: 95  
Siteler / ANKARA / TURKEY  
Tel: +90 312 815 15 58

### MAĞAZA / SHOWROOM

Önder Mah. Akçeşme Sokak No: 14  
Siteler / ANKARA / TURKEY  
Tel: +90 312 349 68 68



www.unvermakina.com.tr | unvermakina@unvermakina.com.tr

www.instagram.com/unver\_makina | www.facebook.com/unvermakina